



Technical Overview

The PM-EM210-M is a compact energy meter that has a removable front LCD display that allows it to be either DIN-rail or panel mounted.

The energy meter is designed for active and reactive energy metering. All operations, including programming and viewing up to seven display pages are performed using the two push buttons on the detachable display. It is possible to block the access to programming by means of a trimmer position on the rear of the display.

Standard meters are non-MID. For billing use, add annex -B+D option. Extra system information is required please contact Sontay Support.

Features and Benefits

- Detachable display
- Multi-use housing for both Din-rail and panel mounting applications
- Compact size
- Modbus output
- Self-powered

Product Codes

PM-EM210-M

Energy analyser with Modbus output

Option (add to part code above)

-B+D

Annex B+D Certification

Specification

Measurements:

System W, var, PF, Hz, Phase sequence;
Single-phase VLL, VLN, A, PF, kWh, kvarh

Frequency

45 to 65 Hz

Display

2 lines

Housing

Nylon PA66, self-extinguishing
UL 94 V-0

Mounting

Din-rail or panel

Output types:

Pulse Open collector
Modbus RS485

RS 485:

Address Programmable, 1 to 247,
Baud-rate 9600 bit/s
Refresh time 1/s

Ambient:

Humidity 0 to 90% (non-condensing)
Temperature -25 to +55°C

Protection:

IP50 (front)

Dimensions:

72 x 72 x 65mm

Country of origin

Italy

Conformity

EMC, LVD, CE & UKCA Marked

NOTE: Full operating instructions and user manual are supplied with the meter.

WEEE Directive:



At the end of the products useful life please
dispose as per the local regulations.
Do not dispose of with normal household waste.
Do not burn.



Overview

Characteristics

Measurements: System: W, var, PF, Hz, Phase-sequence; Single-phase: VLL, VLN, A, PF, kWh, kvarh

The PM-EM210 is a compact energy meter that has a removable front LCD display that allows it to be either DIN-rail or panel mounted. The energy meter is designed for active and reactive energy metering.

All operations, including programming and viewing up to 7 display pages are performed using the two push buttons on the detachable display. It is possible to block the access to programming by means of a trimmer position on the rear of the display.

Applications

- 3-Phase, 4-wire balanced & unbalanced load
- 3-Phase, 3-wire balanced & unbalanced load
- 2-Phase, 3-wire
- 1-Phase, 2-wire

Front Panel Description

1. Keypad

To program the configuration parameters and scroll the variables on the display.

2. Pulse output LED

Red LED blinking proportional to the energy being measured.

3. Display

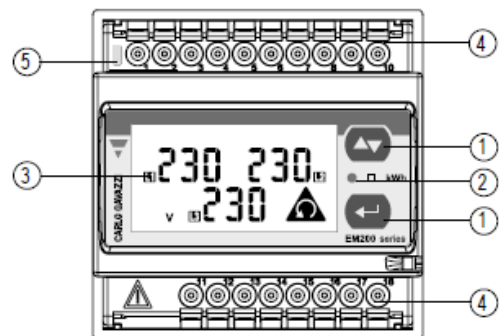
LCD-type with alphanumeric indications to display all the measured variables.

4. Connections

Screw terminal blocks for instrument wiring.

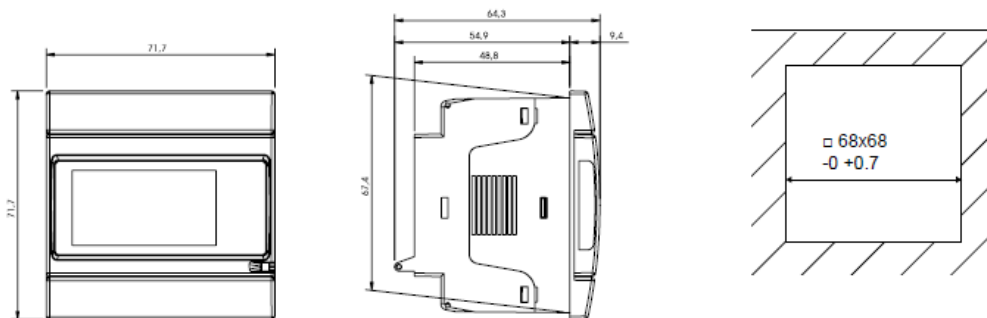
5. Green LED

Lit when power supply is available

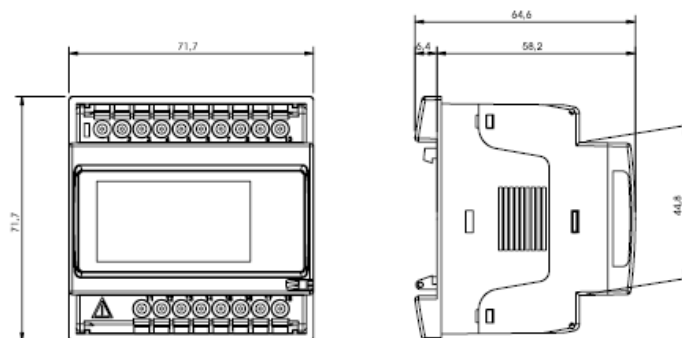


Dimension

Panel mount



DIN-rail mount



Whilst every effort has been made to ensure the accuracy of this specification, Sontay cannot accept responsibility for damage, injury, loss or expense resulting from errors or omissions. In the interest of technical improvement, this specification may be altered without notice.